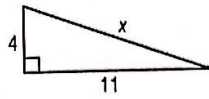


Geometry CP
Unit 9A Review

Find x .

1.

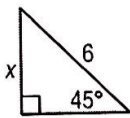


Leave in simplified radical form

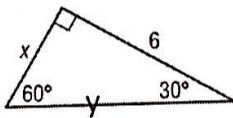
2. State whether form a triangle. If so, is it a right, acute or obtuse triangle?
A) 9, 12, 15 B) 3, 3, 9 C) 8, 12, 10

For #3-8, leave in simplest radical form. No calculator!

3.



4.

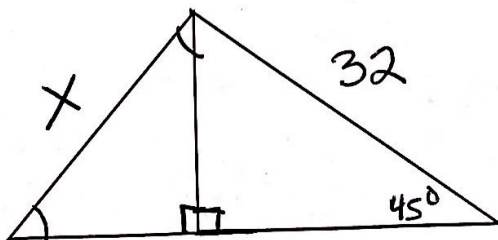


5. A rectangle has a diagonal 20 inches long that forms angles of 60° and 30° with the sides. Find the perimeter of the rectangle.

6. A square has a diagonal length of 10 in. Find the perimeter and area of the square.

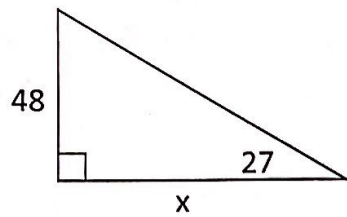
7. If the altitude of an equilateral triangle is 6 ft, find the perimeter of the triangle.

8.

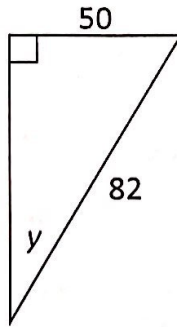


#9- 12 For each problem, solve for x . All angles are in degrees. Round all other problems to tenths. Remember to show the basic equation and calculator-ready form on all trig problems.

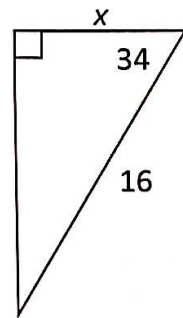
9.



10.



11.



12. Ben wants to ride down a steel beam that is 5m long and is leaning against a tree at an angle of 65° to the ground. His friends want to find out how high up in the air he is when he starts? Solve for the height of the beam at the top of the tree.